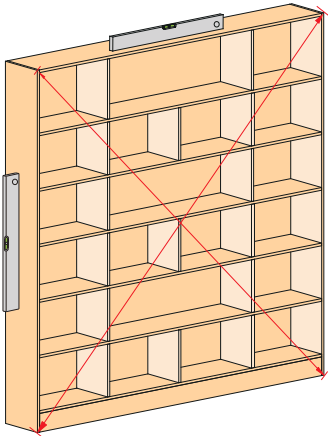


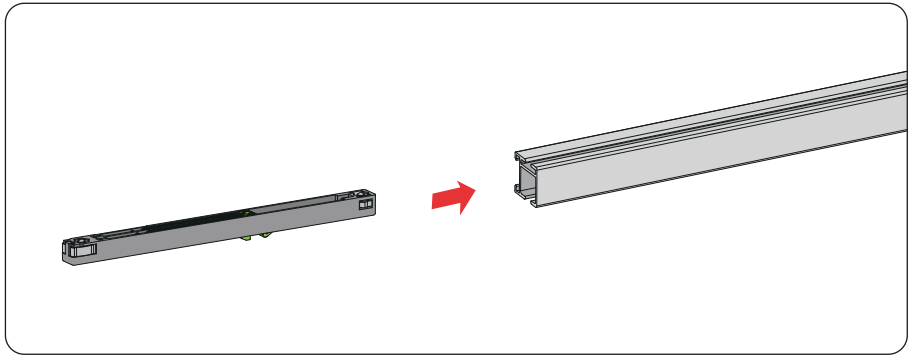
Installation steps:

Cabinet layer board thickness is 18 mm

1 Cabinet measurement

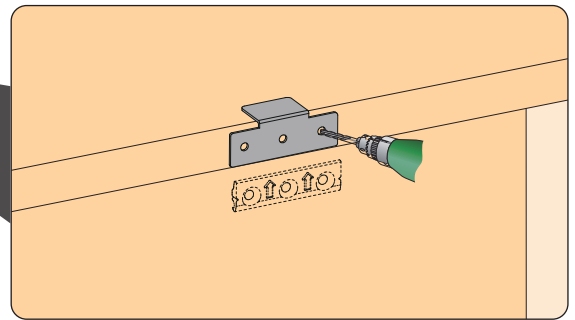
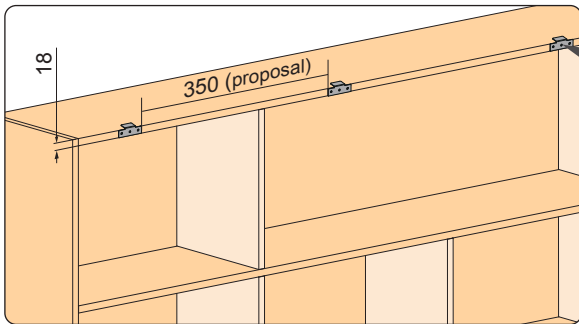


2 Install damper



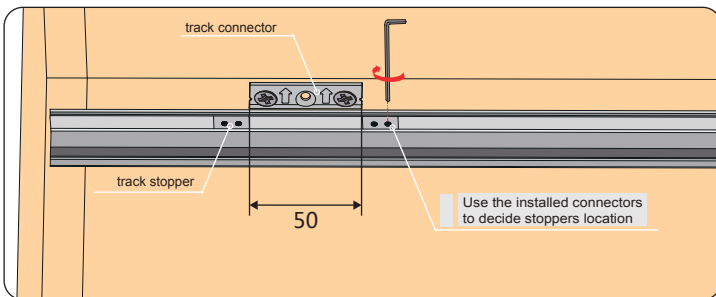
3 Install track connector

1 Use drilling mould to fix connectors installation location

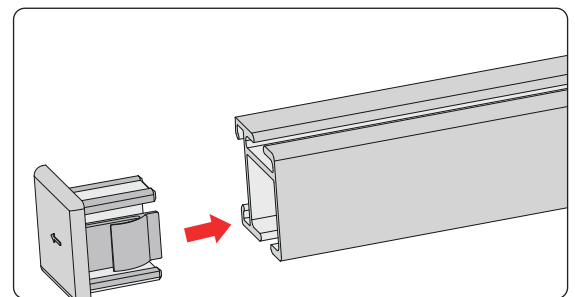


4 Install track stopper

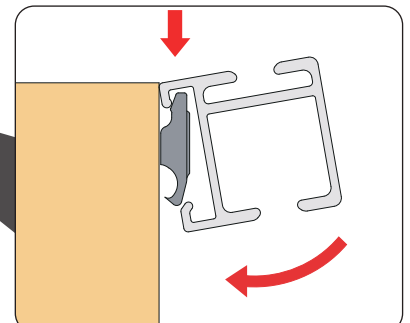
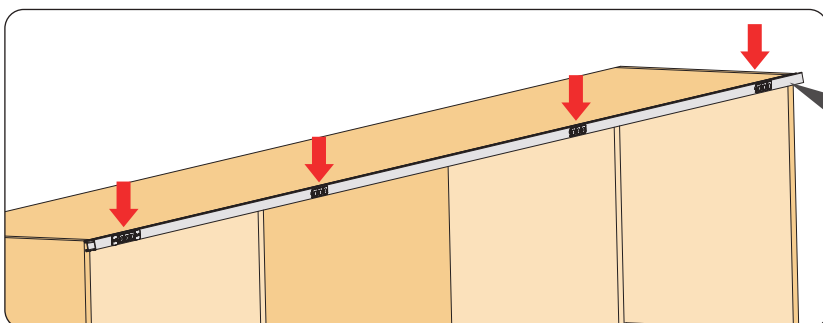
2mm hex wrench



5 Install track plug



6 Install track

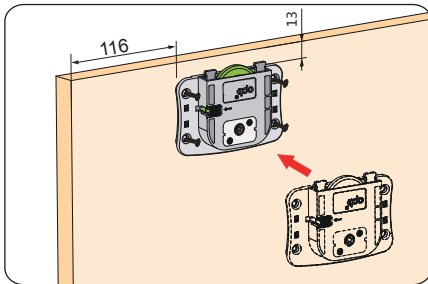


Installation steps:

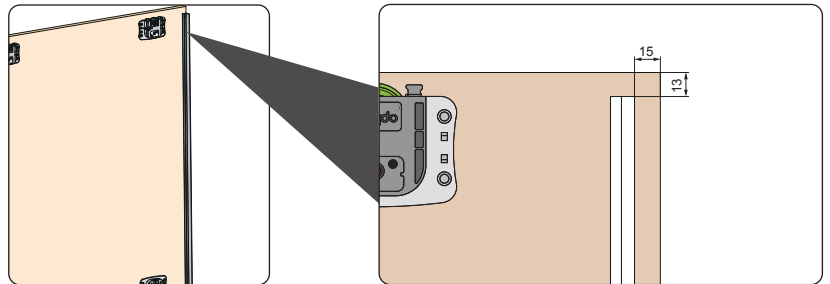
Cabinet layer board thickness is 18 mm

7 Install door

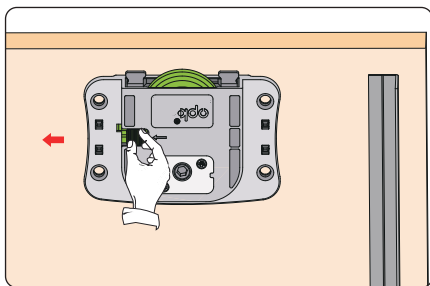
1 Install top&bottom roller



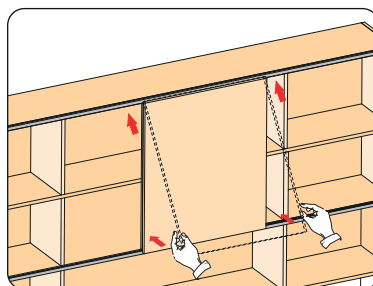
2 Install decoration profile



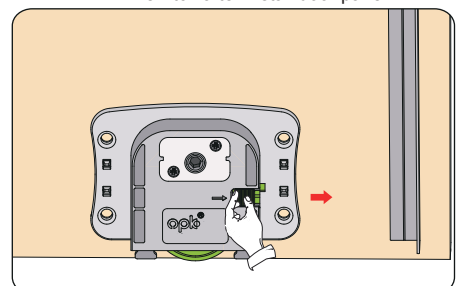
3 Open the top roller adjustable switch



4 Put door panel into track



5 Open the bottom roller adjustable switch after install door panel

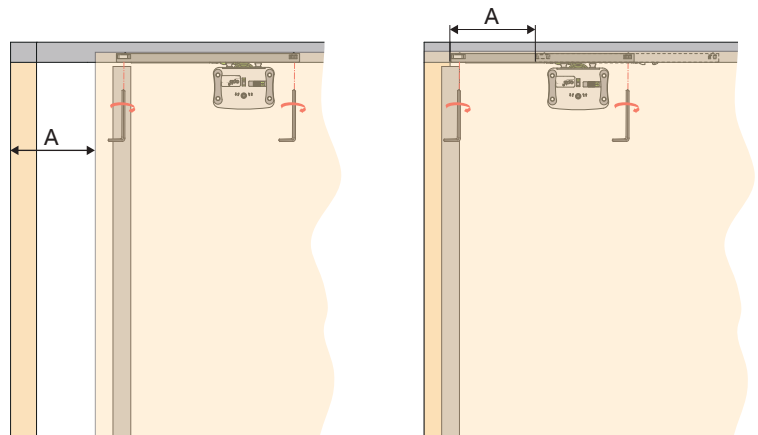
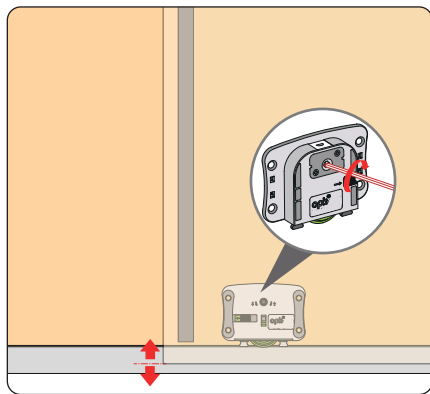


8 Adjust the door

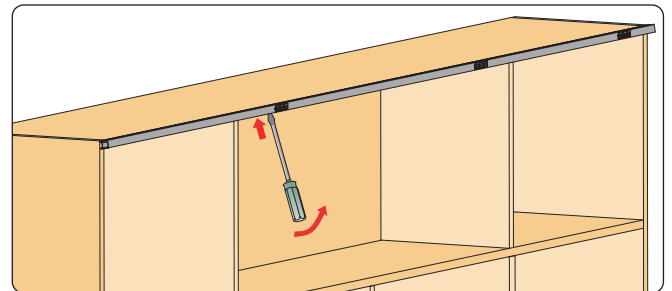
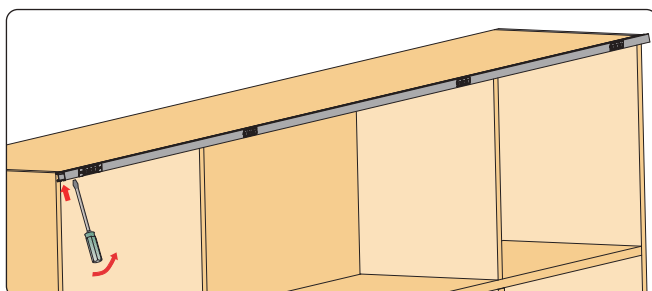
1 Adjust the door balance

2 Adjust the door damping (adjust damping stopper)

2mm hex wrench



Disassembly track



Slantly insert flathead screwdriver through the bottom track, until it gets close to connection piece, then pry open the track