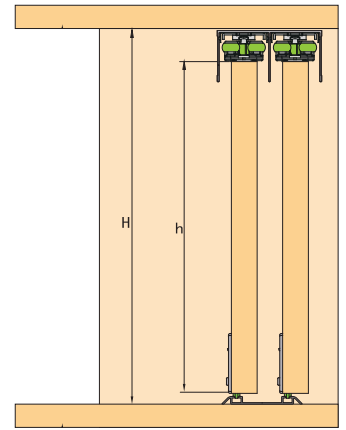
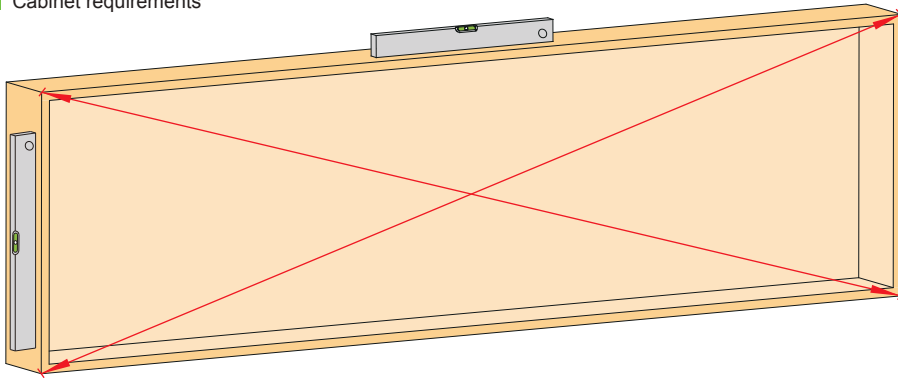
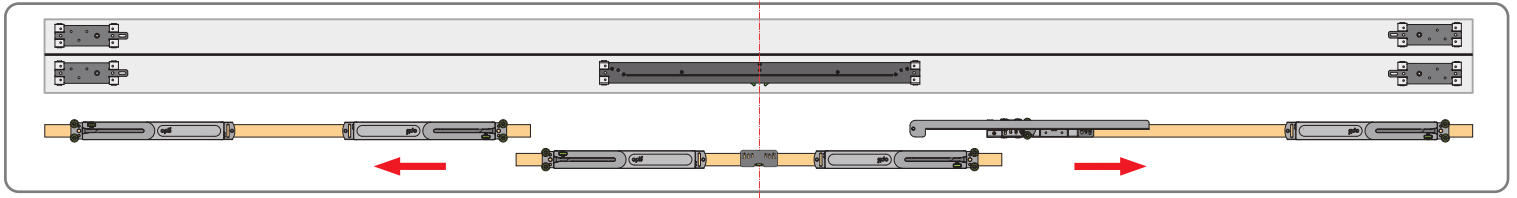


1 Cabinet requirements



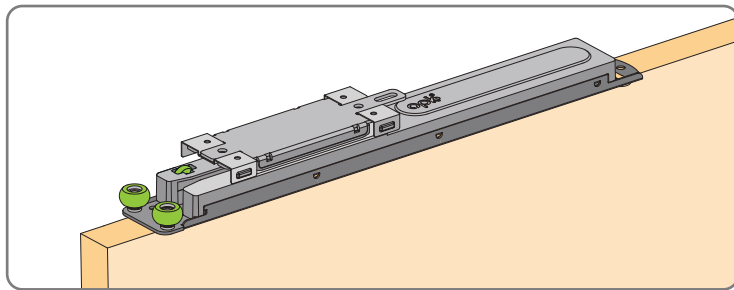
h (Door Height) = H (Inner Door Frame Height) - 43mm

2 Instruction of installation

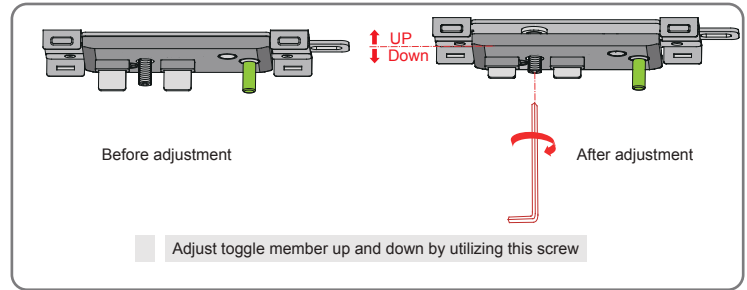


3 Product technical features

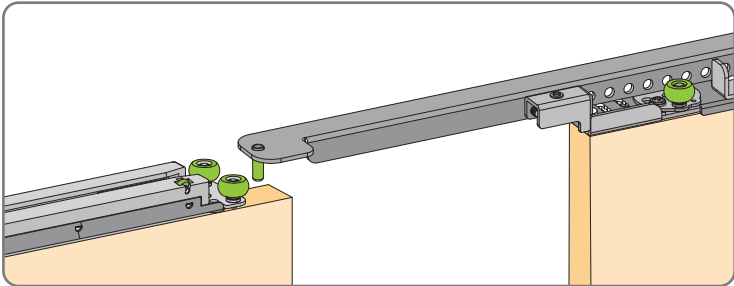
1



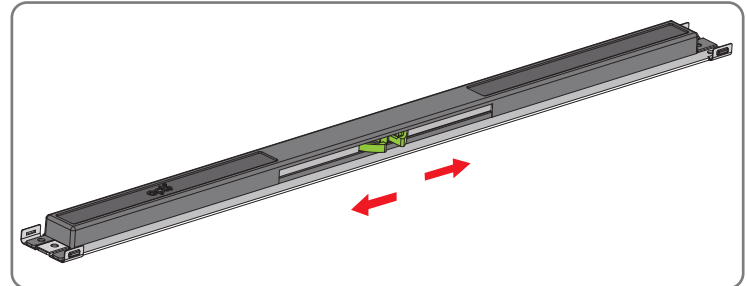
2



3 Two-way buffer (inner door)

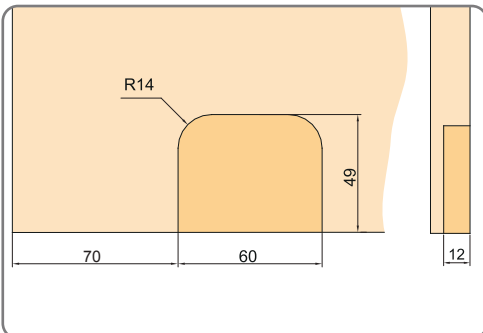


4 Double buffer to left and right(outer door)

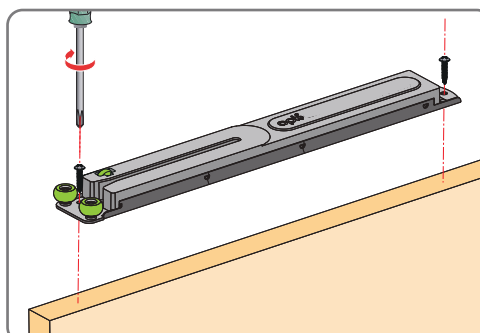


4 Installation of inner door

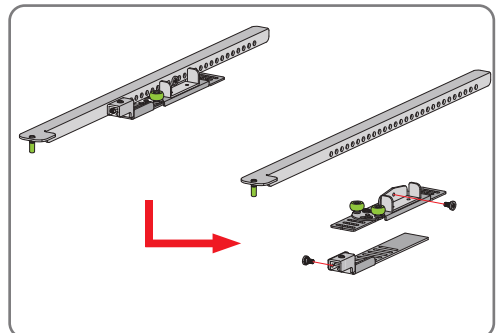
1 Door slot size



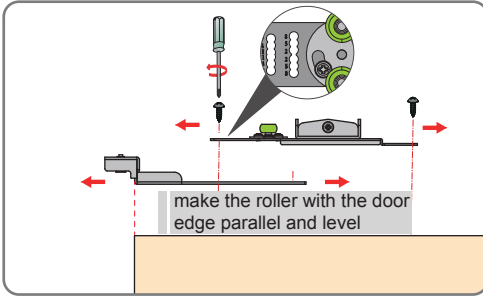
2 Install damping top roller



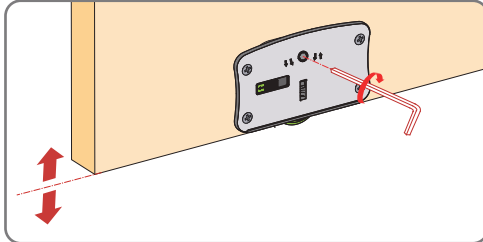
3 Disassemble collision up roller



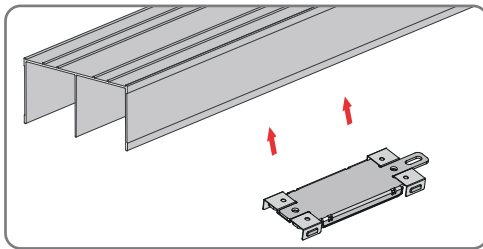
4 Install the collision up roller



7 Adjust the door balance (adjust the bottom rollers)

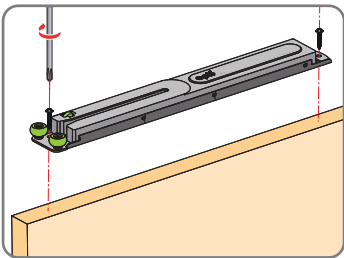


8 Anti-jumping stopper installation

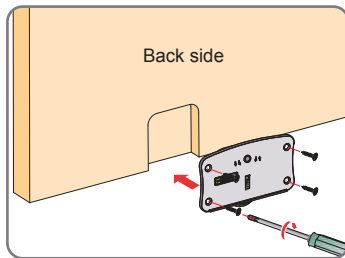


5 Installation of outer door

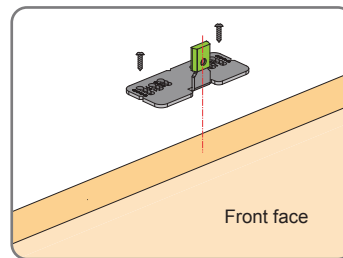
1 Install damping top roller



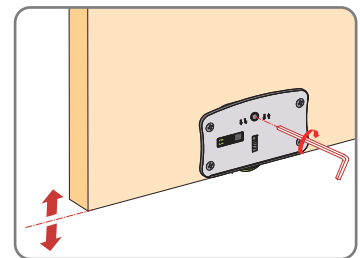
2 Install bottom roller



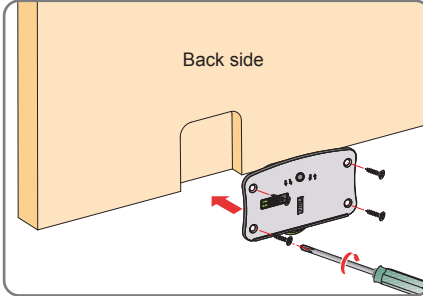
3 Install the stopper of damper in the middle of the panel of inner door



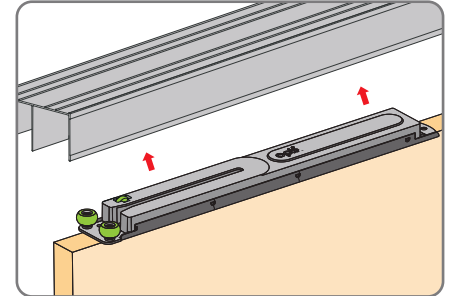
4 Adjust the door balance (adjust the bottom rollers)



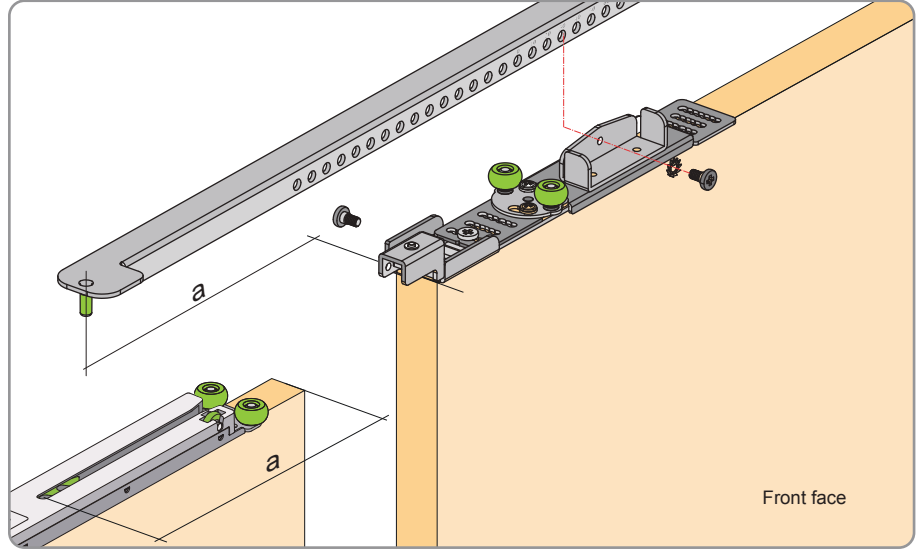
5 Install bottom roller



6 Install the door



9 Calculate the length of installation by formula

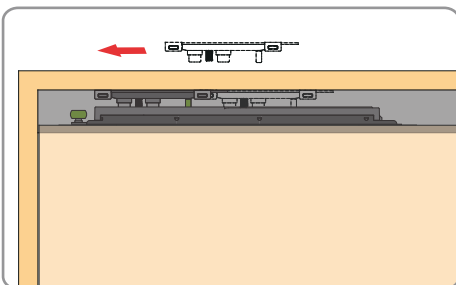


6 Install two-way damper in the middle of the outer track

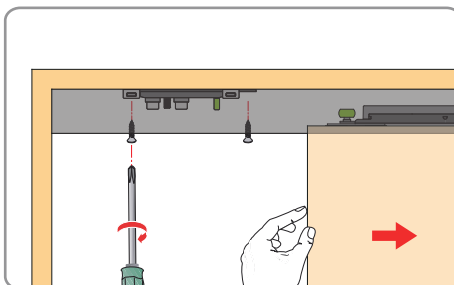


7 Adjust door

1 Anti-jumping stopper into place



2 Fix the anti-jumping stopper



3 Adjust the level height

