

ROKA TV UNIT 1800MM

COMPONENTS

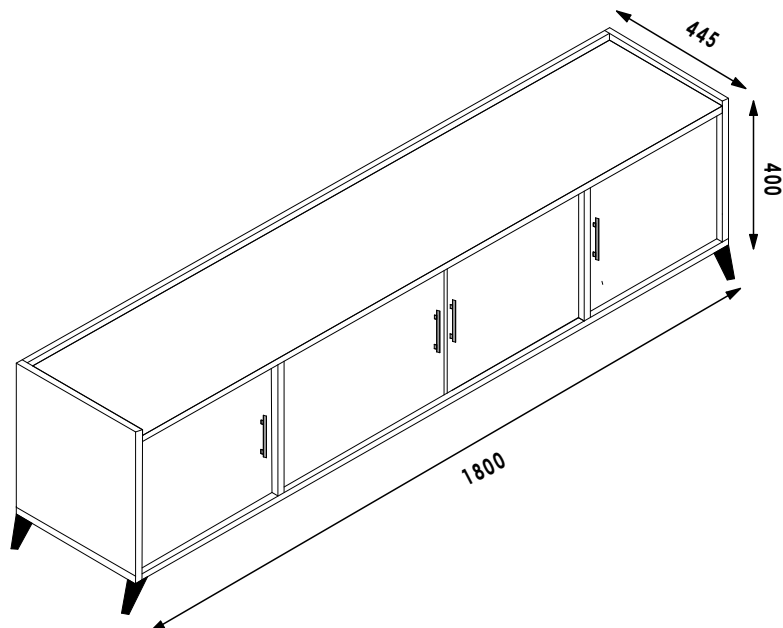
PART NO.	DESCRIPTION	QTY
A	Top	1
B	Floor Bottom	1
C	Visible Side Left	1
D	Visible Side Right	1
E,F,G	Adjustable Shelf	3
H,I,J,K	Door Flat Panel	4
L	Top Rail	1
M,N	Partition	2
O	Back	1

TOOLS REQUIRED

Screw driver	
Mallet	
Measuring tape	

HARDWARE

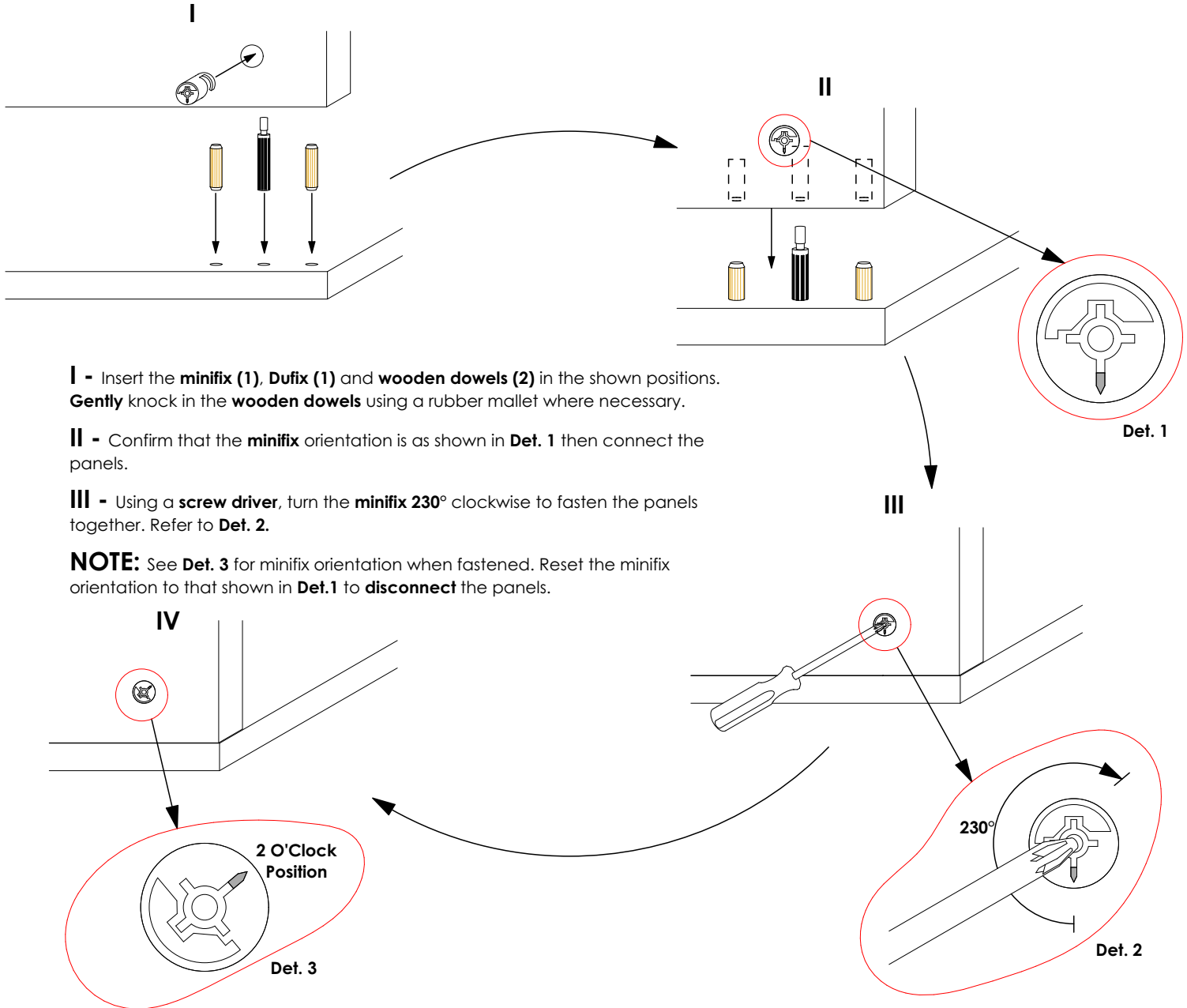
ITEM	IMAGE	QTY
Minifix		18
Dufix		18
Dowel		36
Flipper		12
Euro Dowel		12
Handle		4
Inset Hinge		8
Legs		5
Screws 3.5 x 16MM		22
Screws 3.5 x 50MM		2
Glides		3



GENERAL INSTRUCTIONS

1. Confirm that all panels (15) are in the package before assembling.
2. Check the white sticker on each panel for the labelling (A,B,C,D,E,F,G,H,I,J,K,L,M,N & O).
3. Ensure that the panels are laid on a non-abrasive surface when assembling.
4. Note that all panel connections are done using the system described below.

PANEL CONNECTION AND FASTENING



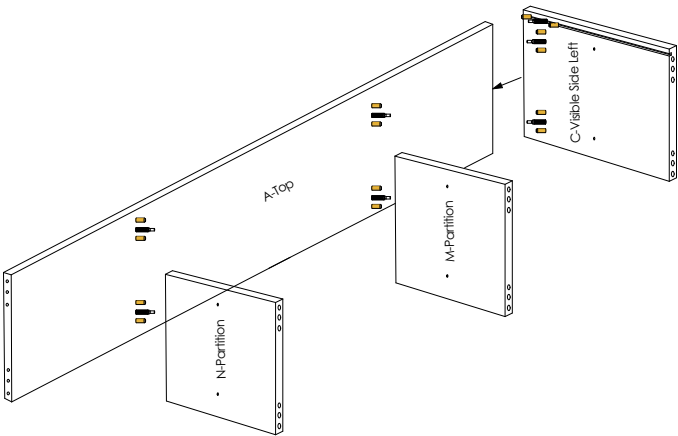
For an easy and enjoyable assembly:

Please read the assembly chart completely. Remove all the parts from the carton box and place them on a smooth surface. Make sure you have exactly all the parts and tools listed in the chart. Start assembling the products following the steps on the chart. Please keep the assembly chart for future reference.

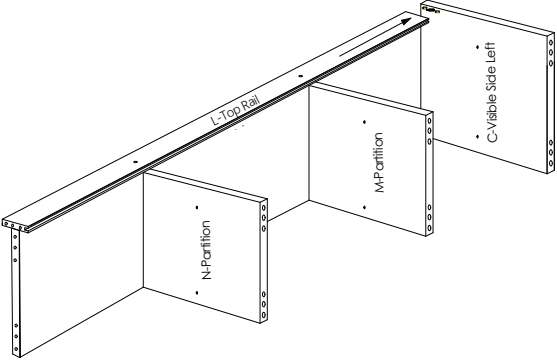


**TWO PERSON
ASSEMBLY
REQUIRED.**

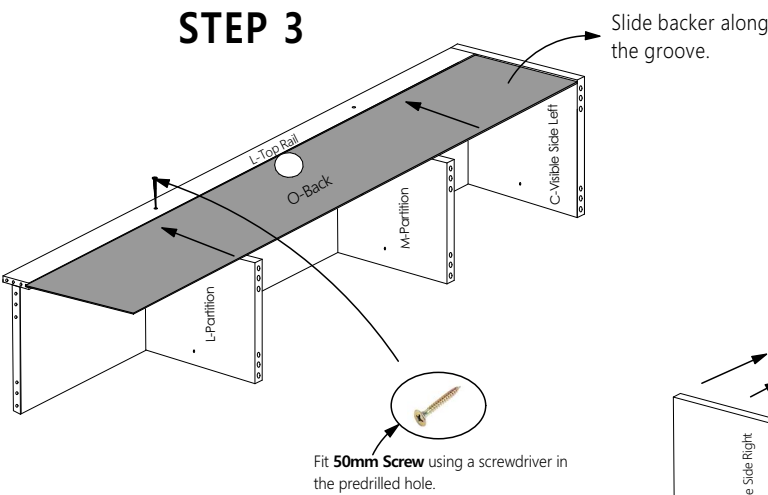
STEP 1



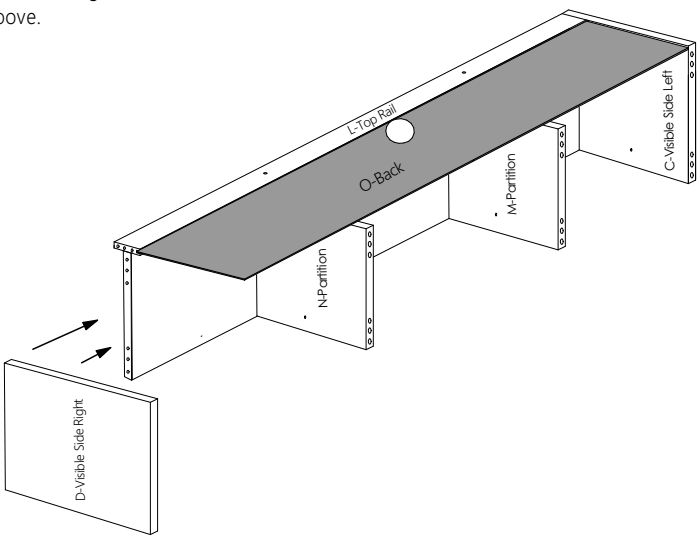
STEP 2



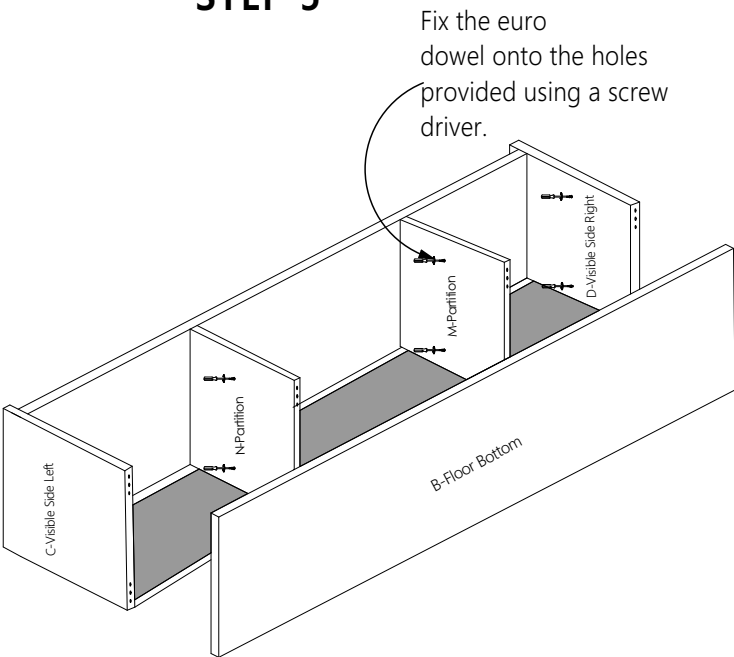
STEP 3



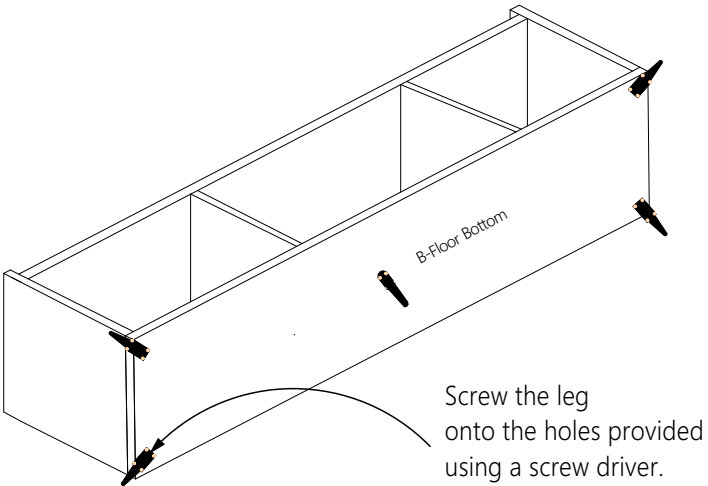
STEP 4



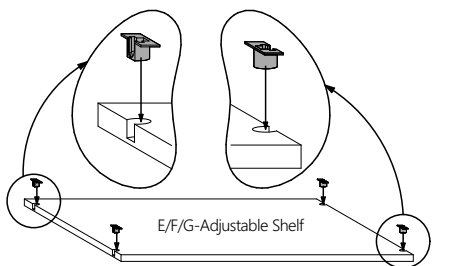
STEP 5



STEP 6

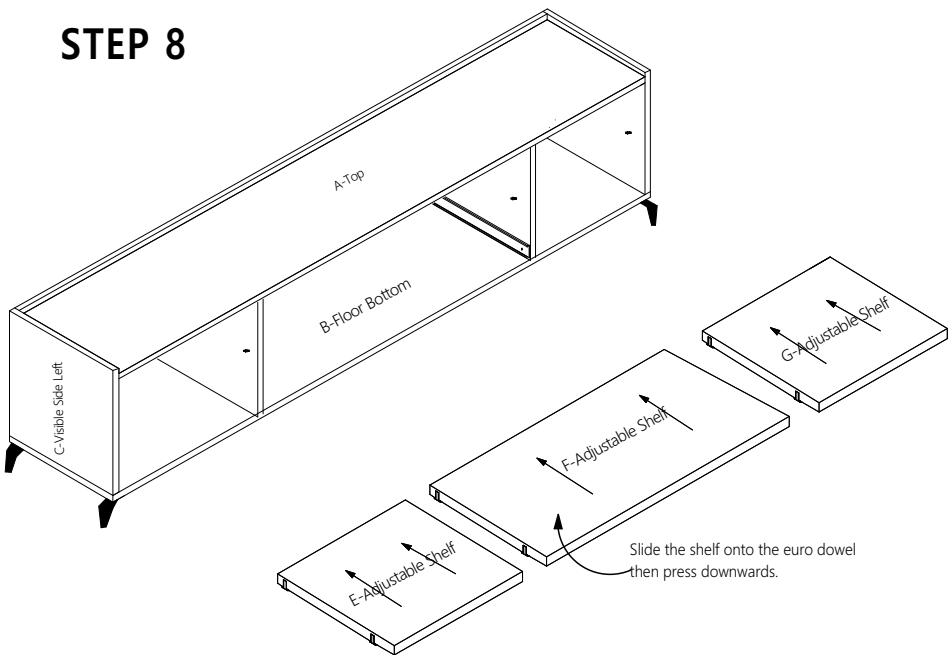


STEP 7



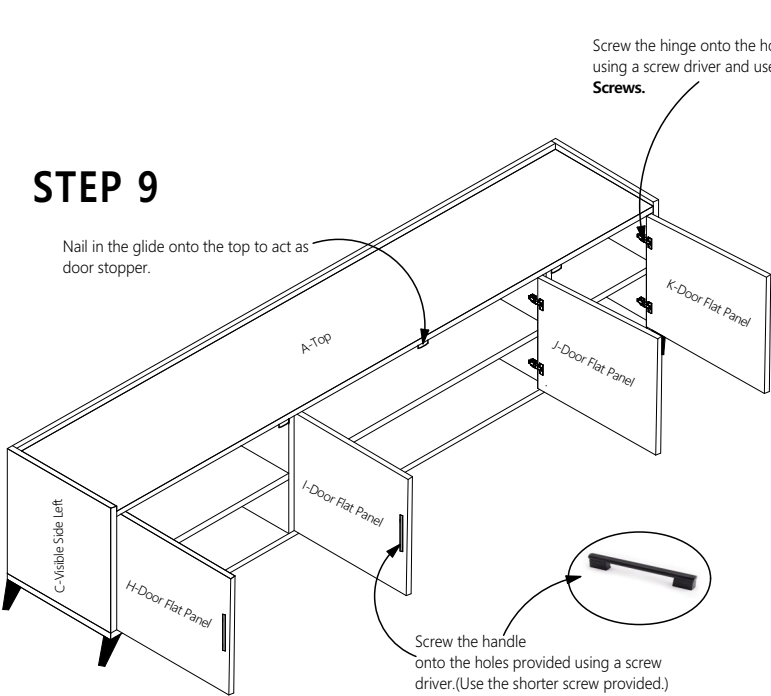
Insert the Shelf support for flipper as shown above onto the Adjustable Shelf.

STEP 8



Slide the shelf onto the euro dowel then press downwards.

STEP 9



Nail in the glide onto the top to act as door stopper.

Screw the hinge onto the holes provided using a screw driver and use **16mm Screws**.

Screw onto the door flat panel first. **Then** screw onto the Visible sides and Partition on the pilot hole provided as a guide.



HINGE ADJUSTMENT DETAILS

